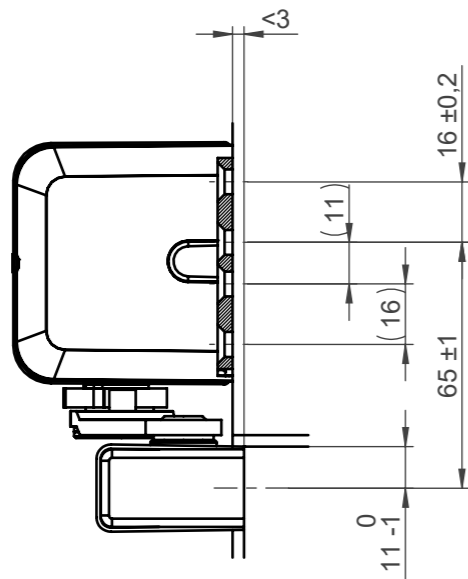
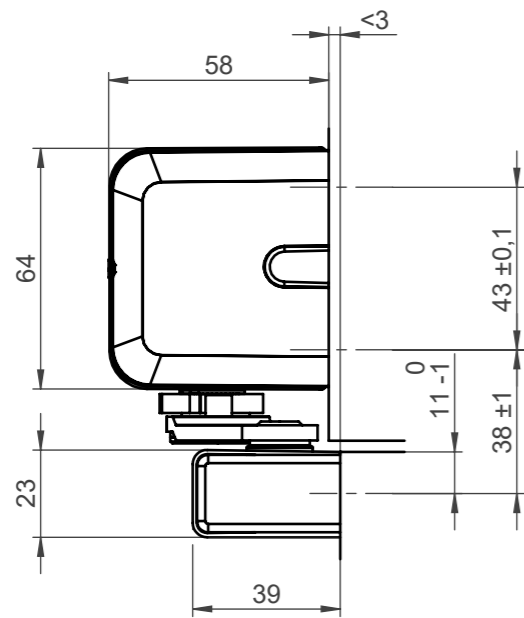
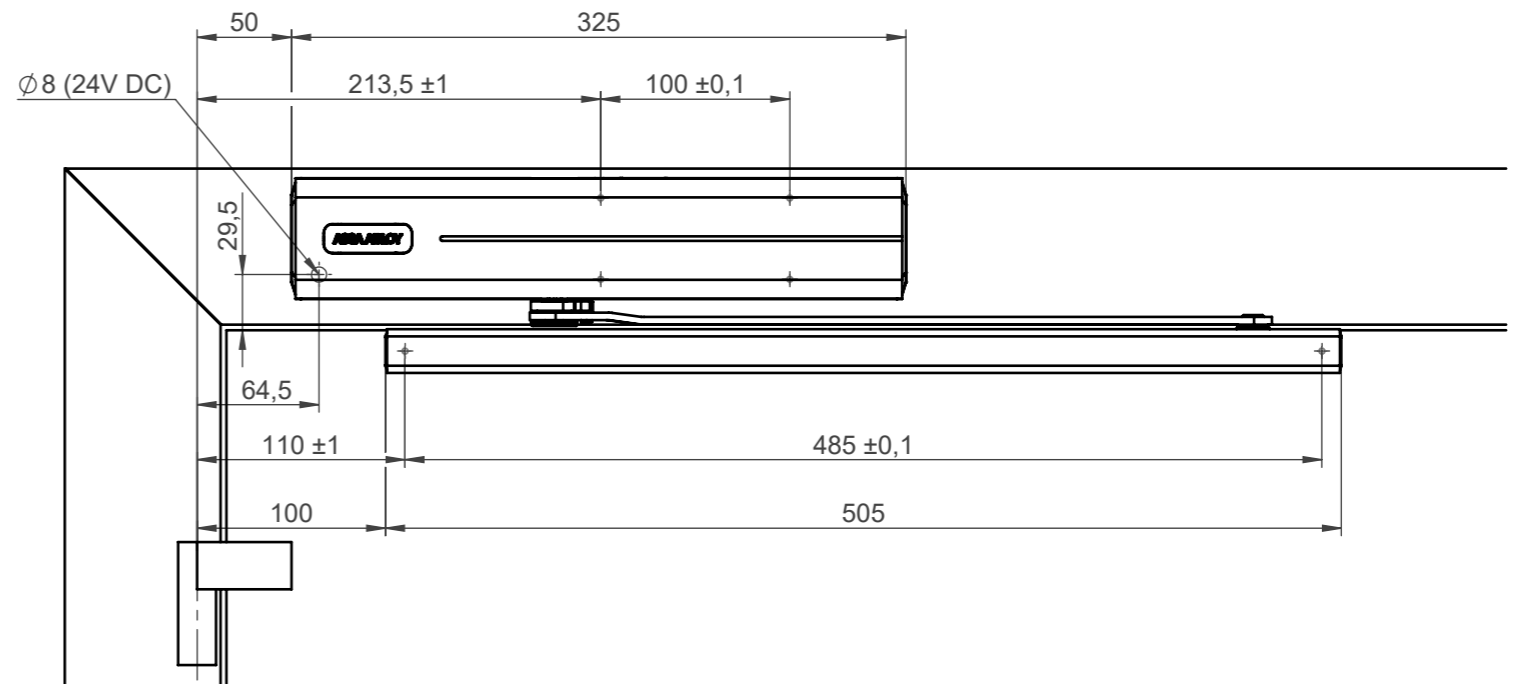


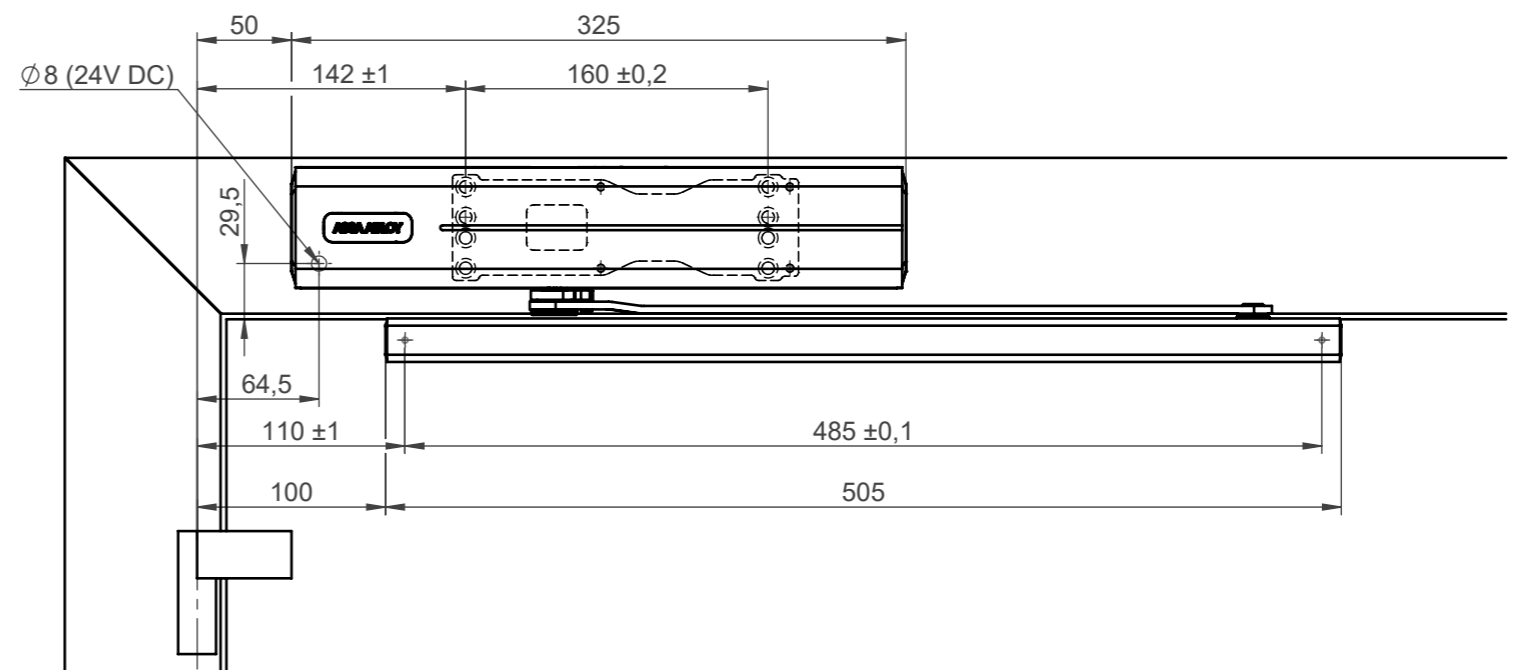
This work is copyright and no part may be reproduced, by any process, nor may any other exclusive right be exercised without the permission of ASSA ABLOY.



**Direktbefestigung  
direct installation**



**Befestigung mit Montageplatte  
installation with mounting plate**



State	Description	Date	Name						
Inspection Dimension				Name local language		DC700G-FM			
Surface:				Material:		General tolerance:			
Volume:	Weight:	Surface area:	Created (YYYY-MM-DD):	Designed by:	Drawn by:	Scale:	Projection:		
mm <sup>3</sup>	gram	mm <sup>2</sup>	2018-09-11	andsau	andsau	1:4 (A3)			
<b>ASSA ABLOY</b>			Door closer accessory			Alternate ID			
ASSA ABLOY Sicherheitstechnik GmbH			frame installation hinge side			<b>DC700G-FM-1000</b>			
			Kopfmontage Bandseite			Document ID		Rev.:	
						<b>D001007148-001</b>		<b>1</b>	