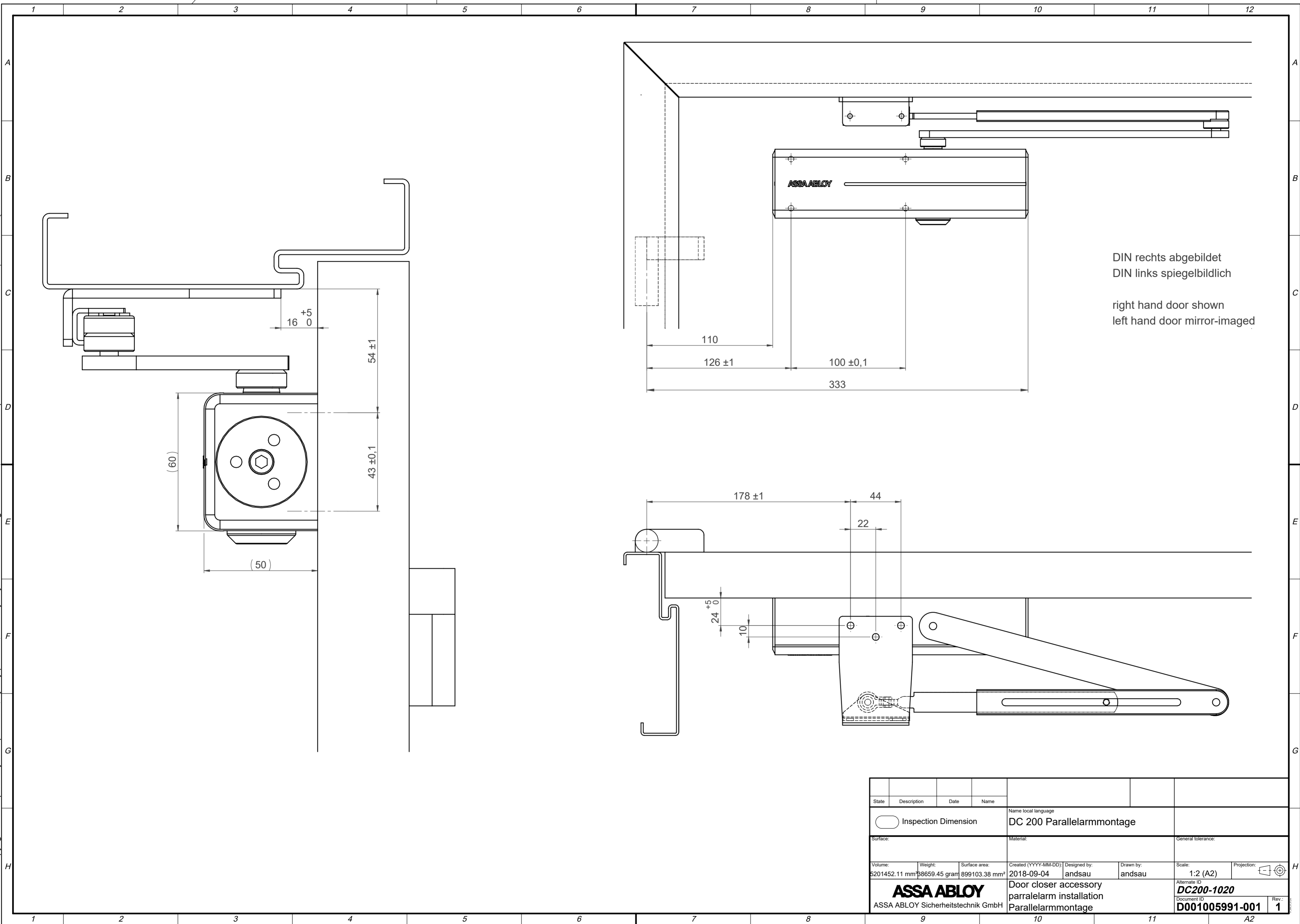


This work is copyright and no part may be reproduced, by any process, nor may any other exclusive right be exercised without the permission of ASSA ABLOY.



DIN rechts abgebildet
 DIN links spiegelbildlich
 right hand door shown
 left hand door mirror-imaged

State	Description	Date	Name	Name local language		General tolerance:	
	○ Inspection Dimension			DC 200 Parallelarmmontage			
Surface:			Material:			General tolerance:	
Volume:	Weight:	Surface area:	Created (YYYY-MM-DD):	Designed by:	Drawn by:	Scale:	Projection:
5201452.11 mm³	38659.45 gram	899103.38 mm²	2018-09-04	andsau	andsau	1:2 (A2)	1
ASSA ABLOY ASSA ABLOY Sicherheitstechnik GmbH			Door closer accessory parralelarm installation Parallelarmmontage			Alternate ID DC200-1020 Document ID D001005991-001 Rev.: 1	